

REVISIONS		DATE	APPROVED
REV	DESCRIPTION		
A	INITIAL RELEASE	04-26-95	JWM

NOTES:

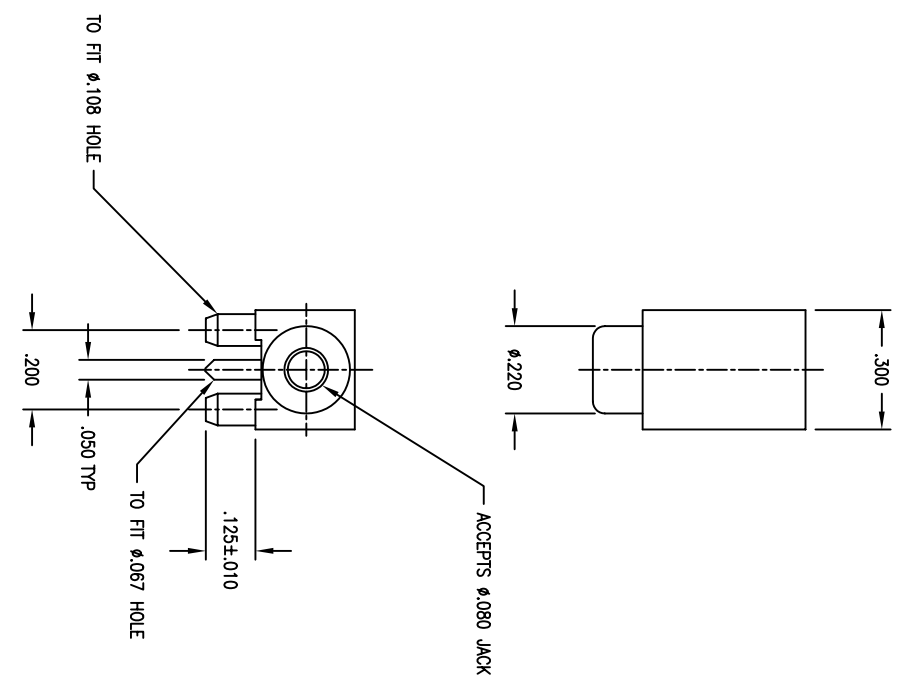
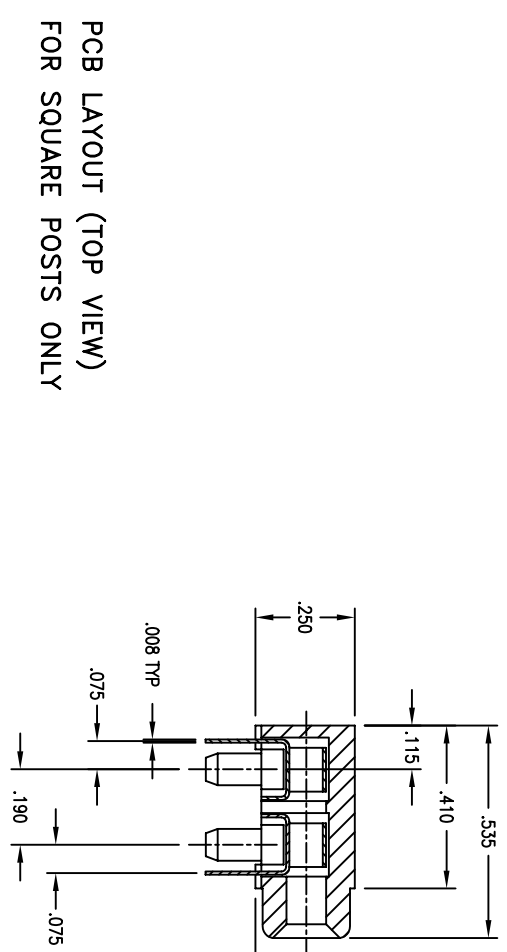
1. MATERIALS AND FINISH:
INSULATOR - GLASS FILLED POLYESTER, 94W-0 RATED.

CONTACT MATERIAL - BERYLLIUM COPPER

CONTACT PLATING - .000100 WHITE FINISH 60/40 Sn/Pb OVER .0000050 Ni

2. ELECTRICAL CHARACTERISTICS:
INSULATION RESISTANCE - 5000 MEGOHMS

AWI PART NUMBER	INSULATOR COLOR
8801P-1-239	BLACK
8801P-12-239	RED



CUSTOMER DRAWING

APPROVED		DATE
NAME	JWM	04-95
DRAWN	JWM	04-95
CHECKED	YL	04-95
QUALITY	WBK	04-95
APPROVED	JWM	04-95

THE INFORMATION, DATA AND/OR SERVICES CONTAINED ON THIS DRAWING ARE PROPRIETARY TO A.W. INDUSTRIES AND MAY NOT BE COPIED, REPRODUCED OR DISCLOSED IN ANY MANNER WITHOUT THE WRITTEN PERMISSION OF A.W. INDUSTRIES.

ALL DIMENSIONS ARE IN INCHES.
TOLERANCES:
DECIMAL .XX ±.015
.XXX ±.005
ANGLE ±1/2°

A.W. Industries, Incorporated
6788 N.W. 17th AVENUE
Fort Lauderdale, FL 33309

Ø.080 TEST JACK
SINGLE LAYOUT P (SQUARE POSTS)

SIZE C
SCALE NONE
ACAD FILE NO. 03-0312-0A
DWG. NO. 8801P-XX-238
SHEET 1 OF 1