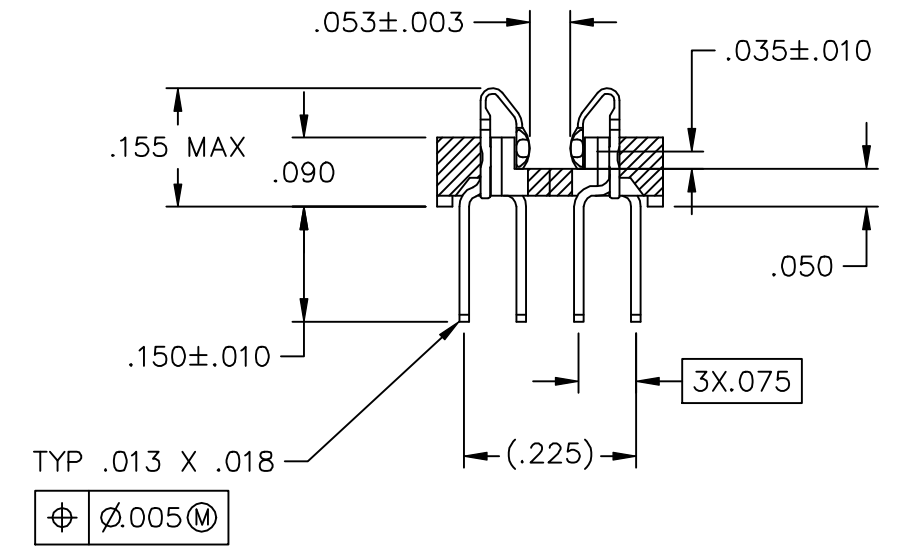
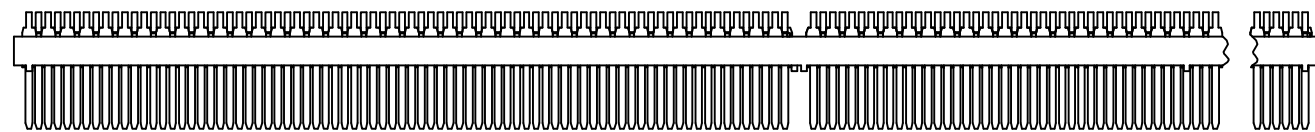
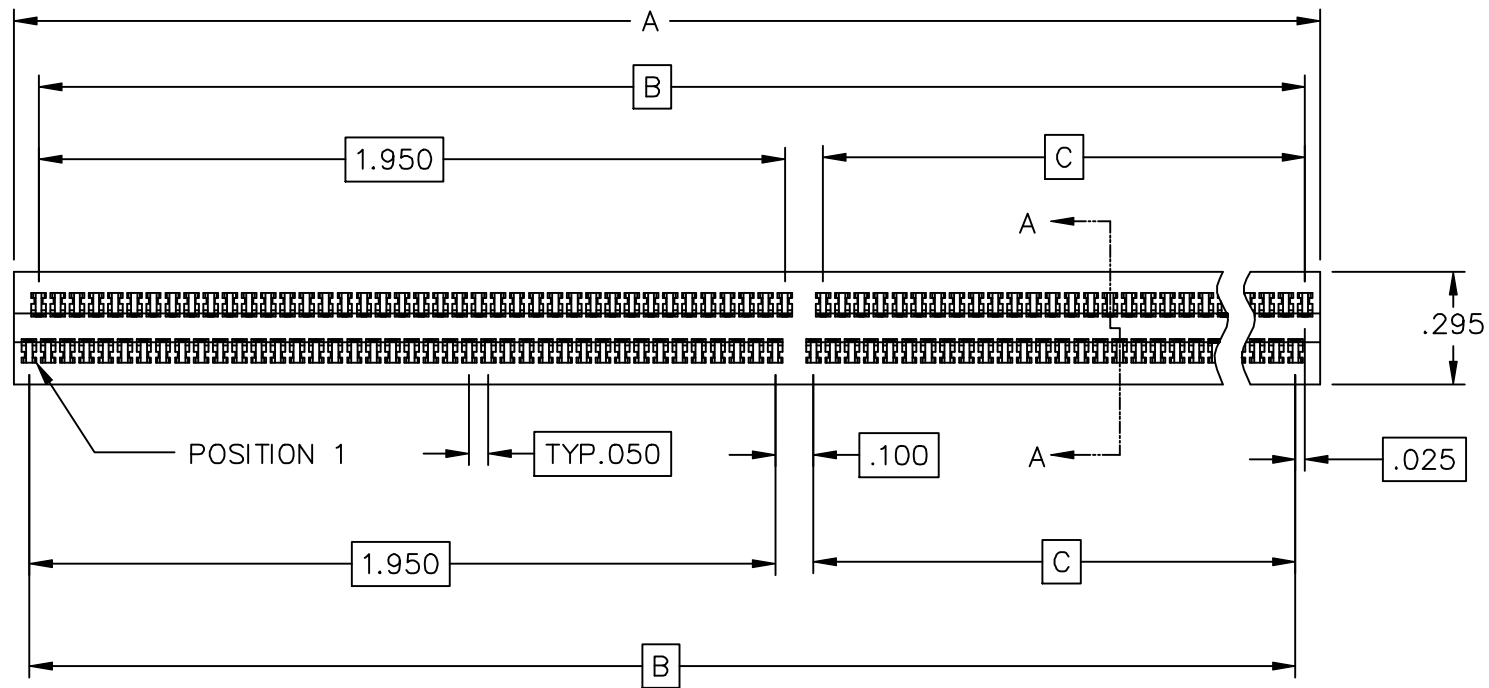


Rev	Description	Date	By
E	GAP DIMENSION CHANGE (REF ESR 20217)	07/03/02	VAR




TYPICAL SECTION A-A
SCALE = 4:1

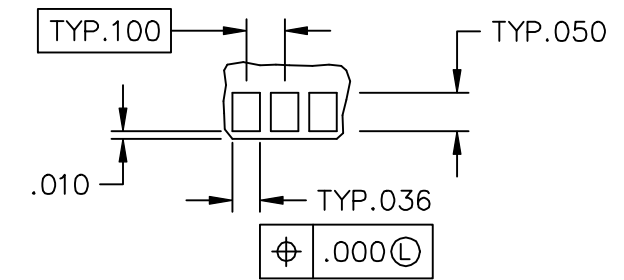
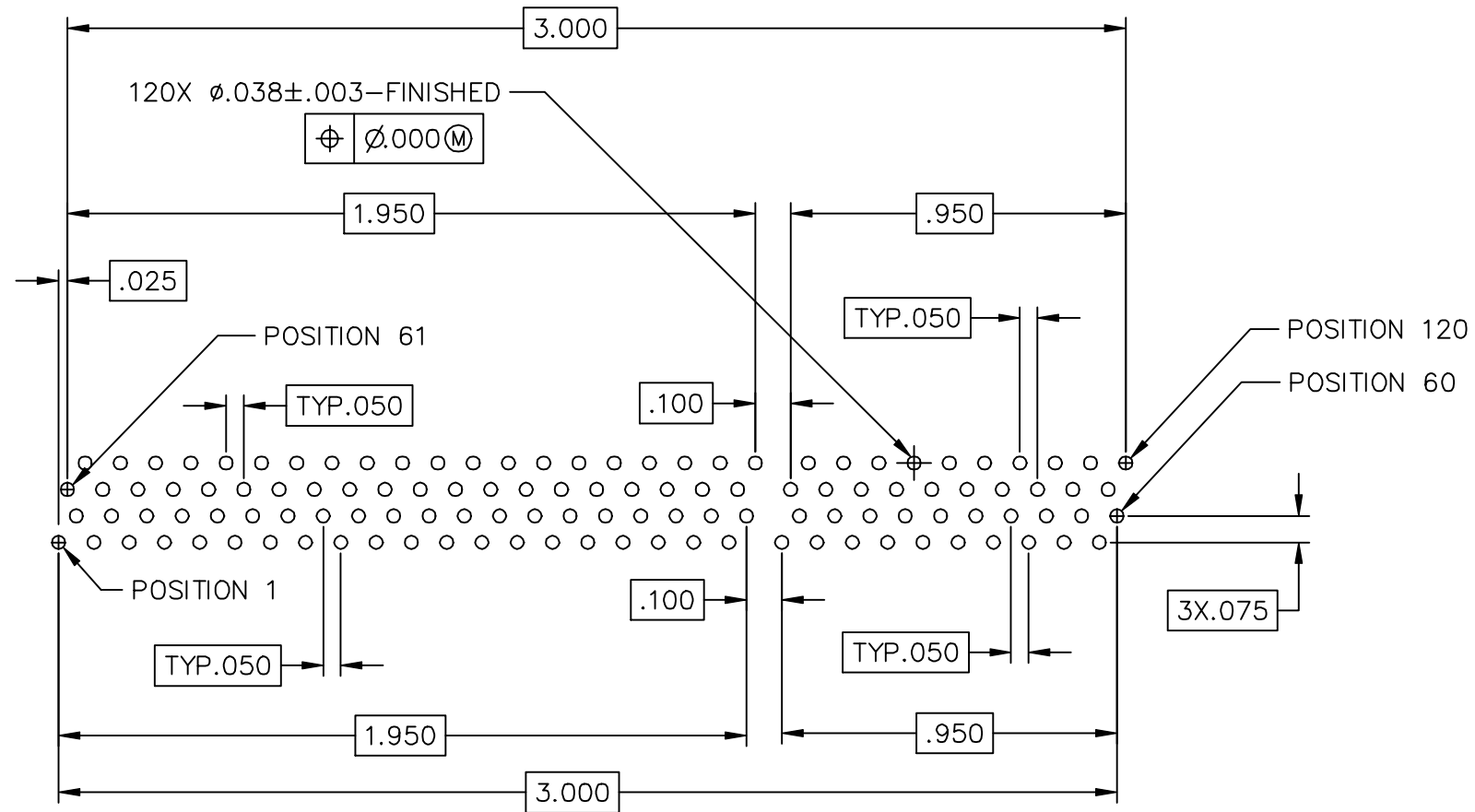
MATERIALS:

- HOUSING: HIGH TEMPERATURE THERMOPLASTIC, UL RATED 94-V0
- CONTACTS: ALLOY C76200 (NICKEL-SILVER) PRE-PLATED 150 MICROINCHES MIN 90-10 TIN-LEAD ALLOY OVER 50 MICROINCHES MIN NICKEL
- SOLDER: SOLID CORE 63-37 TIN-LEAD ALLOY

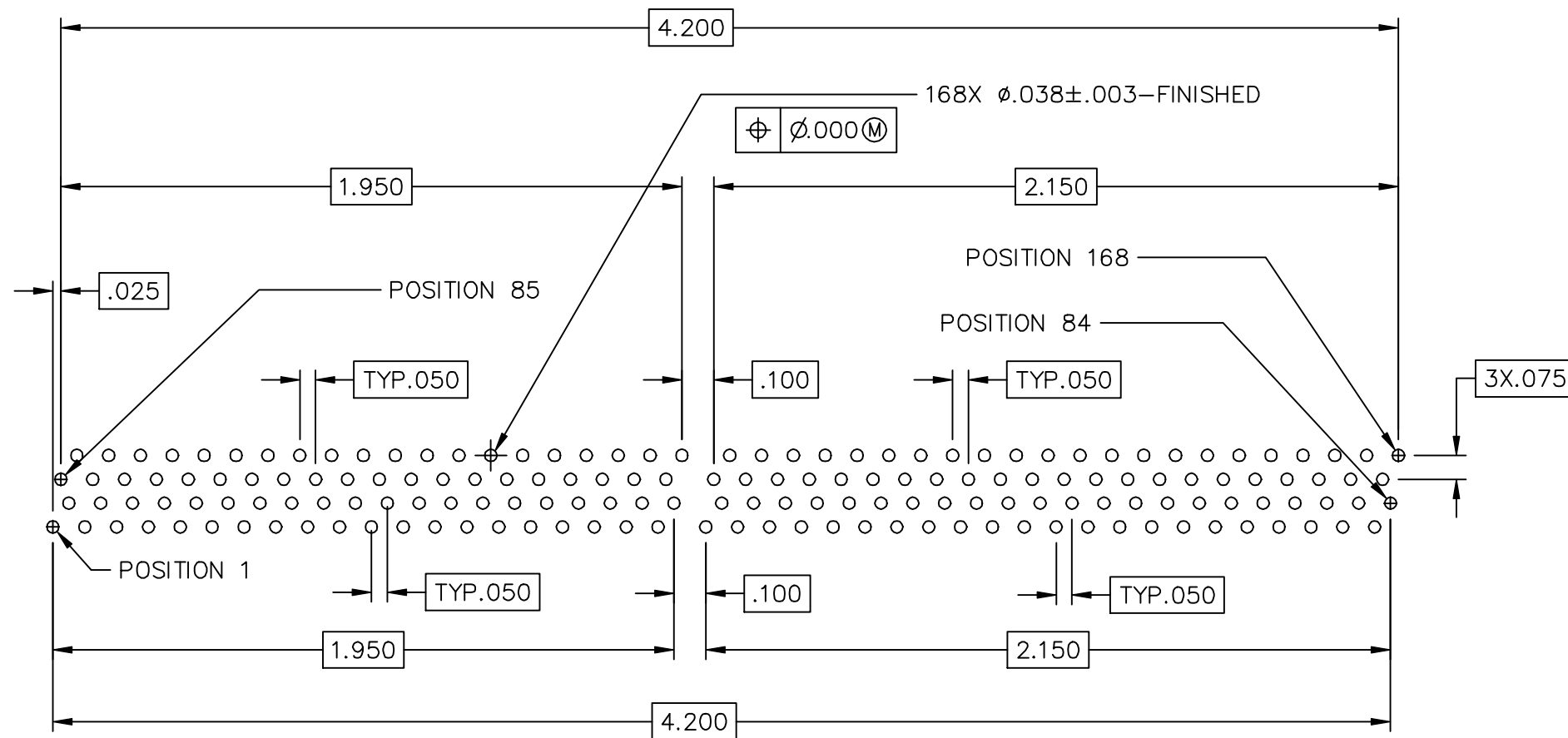
PART NO.	DESCRIPTION	A±.010	B	C
EC1441-D58U-00S	170 POS OFFSET	4.305	4.200	2.105
EC1444-D58U-00S	122 POS OFFSET	3.105	3.000	.950

Unless otherwise specified: All dimensions are: Inches [mm]	Drawn by:	Date:	 AN INTERPLEX INDUSTRIES CO. 100 PIONEER AVE WARWICK, R.I. 02888 TEL: (401) 785-4110 FAX: (401) 781-5730 E-MAIL: sales@tekais.com
	J CACHINA	04/26/99	
-Tolerances- No of places IN [mm] one ±.1 ±2,54 two ±.02 ±0,5 three ±.005 ±0,13 Angular ±1°	Checked by:	Date:	Part No: EC144_-D58U-00S (SEE TABLE)
	JSC	04/28/99	
Title: 2 X 84 QUAD ROW SBL SOCKET		Ref No: S99025	Scale: 2:1 Sheet 1 of 2


Rev	Description	Date	By
E	ALL REVISIONS - SEE SHEET 1	07/03/02	VAR



RECOMMENDED MODULE LAYOUT



RECOMMENDED HOST CARD LAYOUT (COMPONENT SIDE)

Drawn by: J CACHINA	Date: 04/26/99	 AN INTERPLEX INDUSTRIES CO. 100 PIONEER AVE WARWICK, R.I. 02888 TEL: (401) 785-4110 FAX: (401) 781-5730 E-MAIL: sales@tekais.com
Checked by: JSC	Date: 04/28/99	
Title: 2 X 84 QUAD ROW SBL SOCKET		Part No: EC144_-D58U-00S (SEE TABLE)
Ref No: S99025		Scale: 2:1
		Sheet 2 of 2