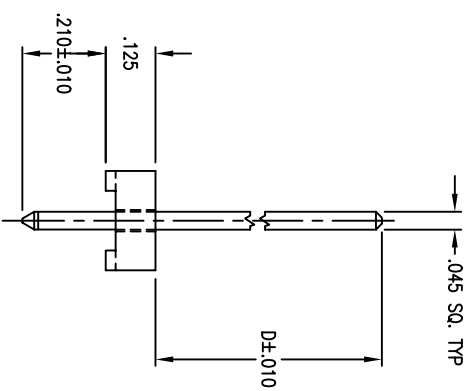
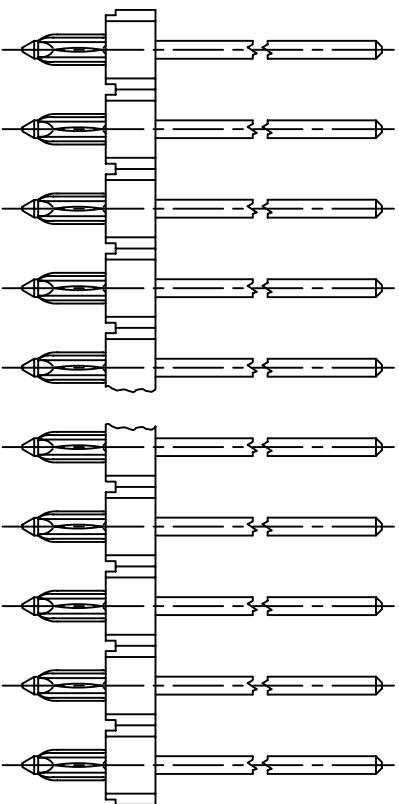
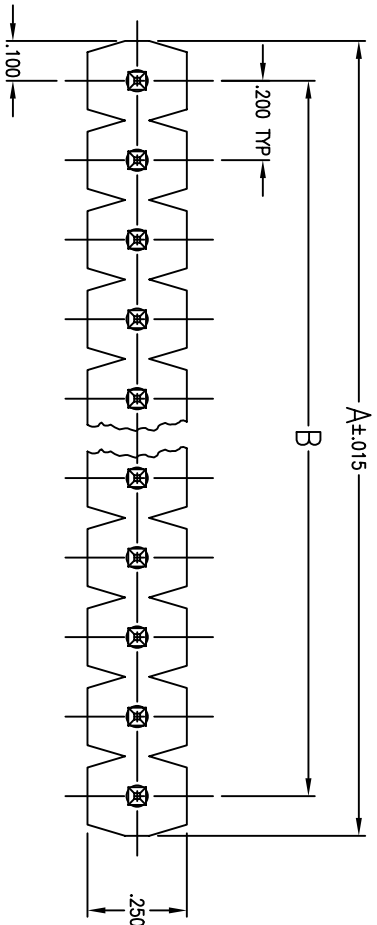
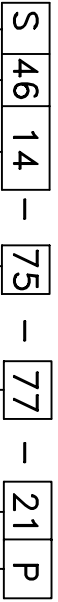


NOTES:

- MATERIALS AND FINISH:**
INSULATOR: 30% GLASS FILLED PBT, 94 V-0 RATED, BLACK
CONTACTS: COPPER ALLOY
FINISH: .000100 in MIN. MATTE FINISH 60/40 SnPb OVER .000050 in MIN. Ni.
- ELECTRICAL CHARACTERISTICS:**
INSULATION RESISTANCE: 5000 MEGOHMS.
DIELECTRIC WITHSTANDING VOLTAGE: 1500 VAC.
CURRENT RATING: 7 AMPS.
- MECHANICAL CHARACTERISTICS:**
OPERATING TEMPERATURE: -55° TO +125°C.
RETENTION IN HOUSING: 5 LBS.
COMPLIANT SECTION:
INSERTION FORCE: 40 LBS MAX. PER PIN
WITHDRAWAL FORCE: 10 LBS MIN. PER PIN.
PTH REQUIREMENTS:
DRILLED HOLE DIA: .0785 \pm .0005
PLATING: .001/.003 COPPER AND .003 MIN. SOLDER.
FINISHED HOLE DIA: .070/.075



PART NUMBERING



CONNECTOR TYPE — S
S — SINGLE ROW
SERIES CODE — 46 — .045 SQ. HEADER ON .200 CENTERS
NUMBER OF POSITIONS — 14
SINGLE ROW — 01 THRU 20

PLATING CODE — 77 — .000150 SnPb OVER .000050 Ni.
TERMINATION — P — PRESS FIT
PRESS FIT POST LENGTH (DIM "E") — 21 — .210

MATING POST LENGTH (DIM "D") — 75 — .750 (STANDARD)
FOR ADDITIONAL MATING LENGTHS, ROUND OFF DESIRED DIMENSION (EX. .305 — 30)

DIMENSIONS

A = (THE NUMBER OF POSITIONS - 1) x .200 + .200

B = (THE NUMBER OF POSITIONS - 1) x .200

APPROVED	
NAME	DATE
FGP	09-97
JWM	09-97
DKJ	09-97
JWM	09-97


THE INFORMATION, DATA AND/OR SPECIFICATIONS CONTAINED ON THIS DRAWING ARE PROPRIETARY TO A.W. INDUSTRIES AND MAY NOT BE COPIED, REPRODUCED OR DISCLOSED IN ANY MANNER WITHOUT THE WRITTEN PERMISSION OF A.W. INDUSTRIES.

ALL DIMENSIONS ARE IN INCHES.

TOLERANCES:
DECIMAL .XX ±.015
.XXX ±.005
ANGLE ±1/2°

TITLE

.045 SQ.HEADER, .200 CENTERS



A.W. Industries, Incorporated
6788 N.W. 17th AVENUE
Fort Lauderdale, FL 33309

SIZE: C
SCALE: NONE
DRAWING FILE NO.: 03-0554-0C
SHEET: 1 OF 1

REV	DESCRIPTION	DATE	APPROVED
A	INITIAL RELEASE (ESR 1099)	09-22-97	JWM
B	REVISED PER ESR #1110	09-14-97	JWM
C	REVISED PER ESR #2119	03-23-01	JWM