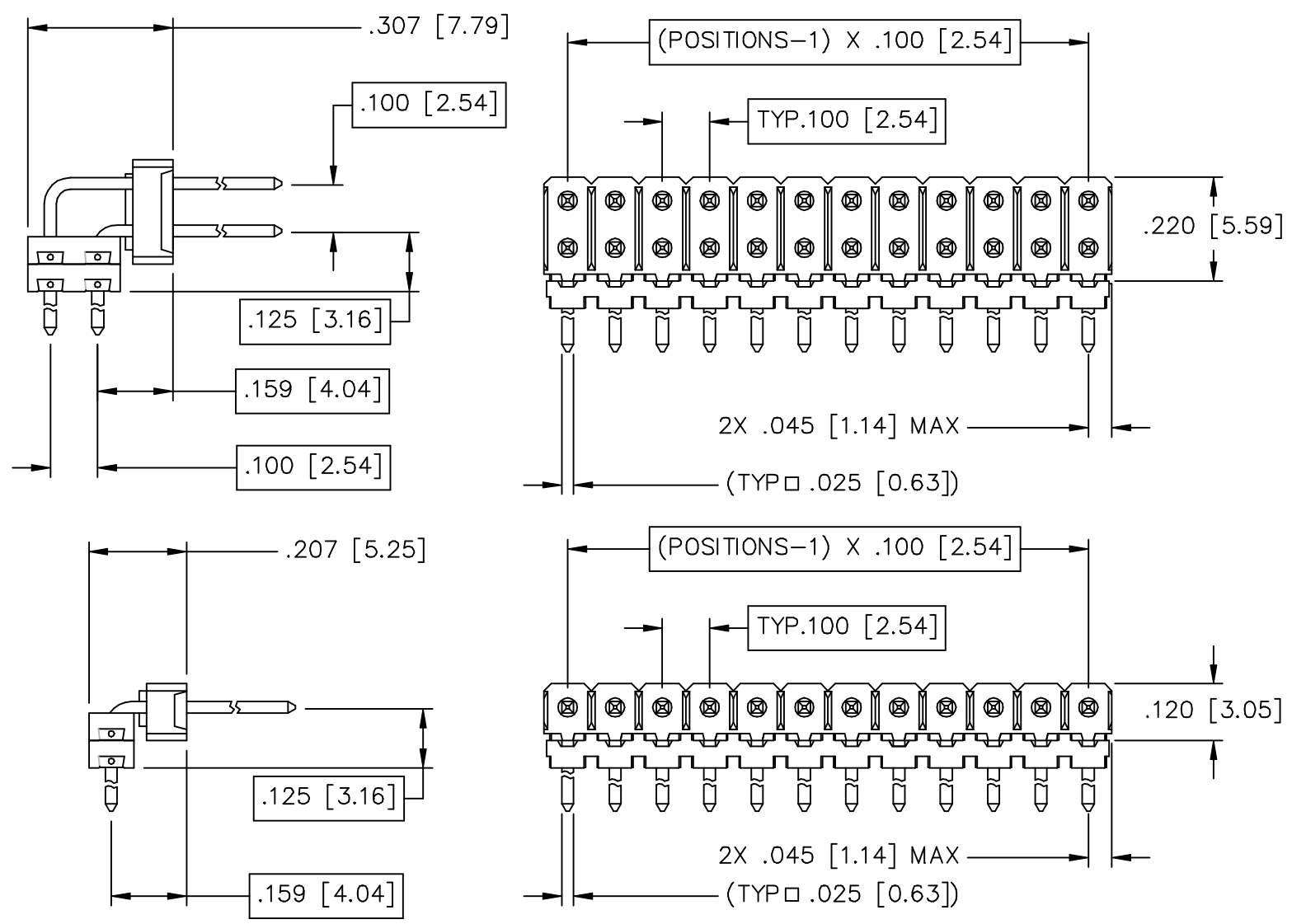


Rev	Description	Date	By
A	INITIAL RELEASE	09/21/05	JSC



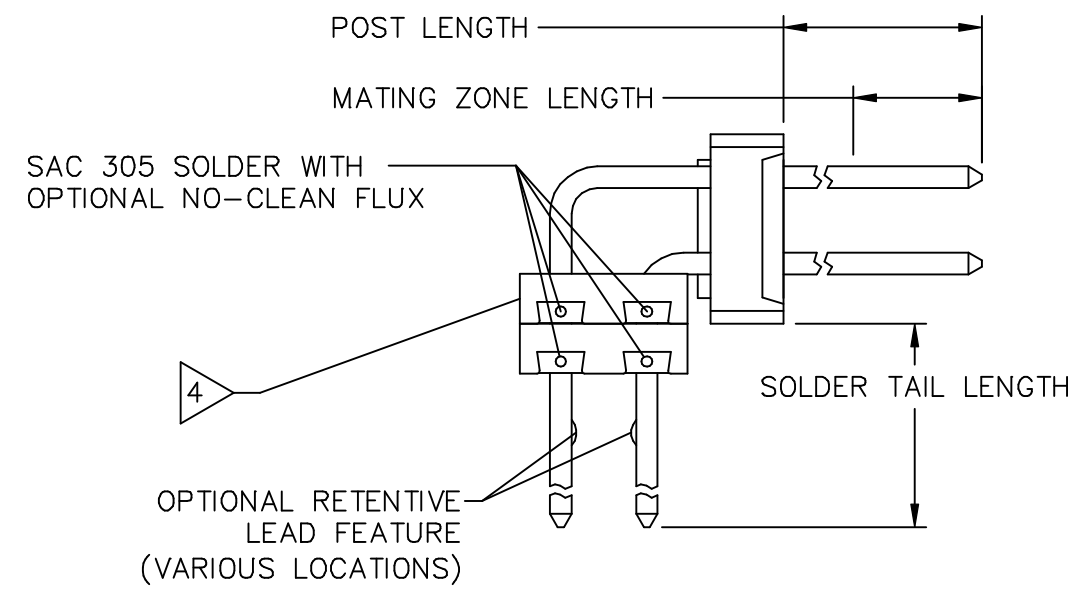
PART NUMBER DESCRIPTION

HR = SERIES DESIGNATOR
 A 1 B B = NUMBER OF ROWS
 - = POSITIONS PER ROW
 - = POST LENGTH
 HO = MATING ZONE LENGTH

DESIGN VARIATION

HO - HIGH SOLDER VOLUME
 S - STRAIGHT
 R - RETENTIVE
 SOLDER TYPE (SAC 305)
 N - NO-CLEAN FLUX
 M - SOLID CORE
 SOLDER TAIL LENGTH
 B - .136 [3.45]

CONTACT FINISH DESIGNATION		
DESIGNATION	MATING ZONE	SOLDER TAIL
B	GOLD - 10 MICROINCHES	PURE TIN - 100 MICROINCHES



- NOTES: UNLESS OTHERWISE SPECIFIED
- INTERPRET THIS DRAWING IN ACCORDANCE WITH ASME Y14.5M - 1994
 - FOR OTHER SIZES, FINISHES, SOLDER VOLUMES OR ADDITIONAL DATA CONSULT TEKA CUSTOMER SERVICE DEPARTMENT
 - CONNECTOR SOLDER VOLUME BASED ON APPLICATION TO A .0932±.0107 [2.36±0.25] THICK PCB
 - UPPER SOLDER WAFER MUST CONTAIN NO-CLEAN FLUX TO ENABLE SOLDER PASS-THROUGH
 - ALL TIN FINISHES ARE LOW STRESS / WHISKER MITIGATING

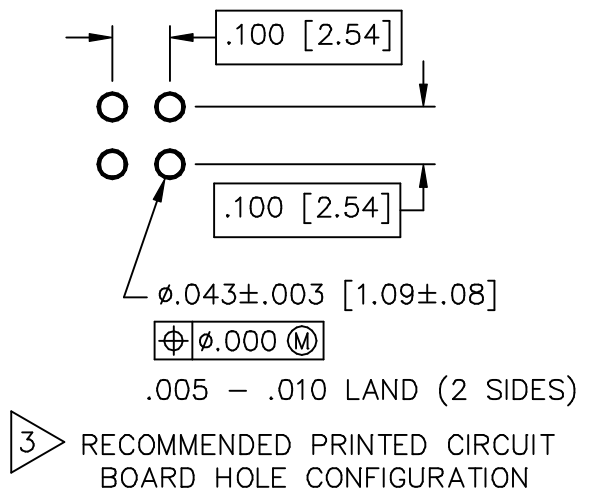
MATERIALS:


HOUSING: HIGH TEMPERATURE THERMOPLASTIC, UL RATED 94-V0

CONTACT: COPPER ALLOY

SOLDER: SEE PART NUMBER DESCRIPTION

CONTACT FINISH: SEE PART NUMBER DESCRIPTION



Unless otherwise specified: All dimensions are: Inches [mm]	Drawn by: J CACHINA	Date: 09/21/05	 AN INTERPLEX INDUSTRIES CO. 100 PIONEER AVE WARWICK, R.I. 02888 TEL: (401) 785-4110 FAX: (401) 781-5730 E-MAIL: sales@tekais.com HTTP://WWW.TEKAIS.COM
	Checked by: JSC Date: 09/21/05		
-Tolerances- No of places IN [mm] one ±.1 ±2,54 two ±.02 ±0,5 three ±.010 ±0,25 Angular ±2°	Title: R/A SB HEADER - .100 [2.54] PITCH, HIGH VOLUME (ROHS COMPLIANT)		Part No: HR___A1BB---HO
	Ref No: S20564	Scale: 3:1	Sheet 1 of 1