

REVISONS		DESCRIPTION	DATE	APPROVED
A		INITIAL RELEASE (ESR 0727, 0728, 0730, 0731)	01.16.97	TRB

**NOTES:**

**1. MATERIALS AND FINISH:**

INSULATOR- GLASS FILLED THERMO-PLASTIC  
POLYESTER, 94V-0 RATED, GREY.  
CONTACT MATERIAL- COPPER ALLOY.

CONTACT PLATING- .000030 Au OVER .000050 Ni ON  
CONTACT POINT, TAIL AND COMPLIANT SECTION .000100  
MATTE FINISH 60/40 SPPb.

**2. ELECTRICAL CHARACTERISTICS:**

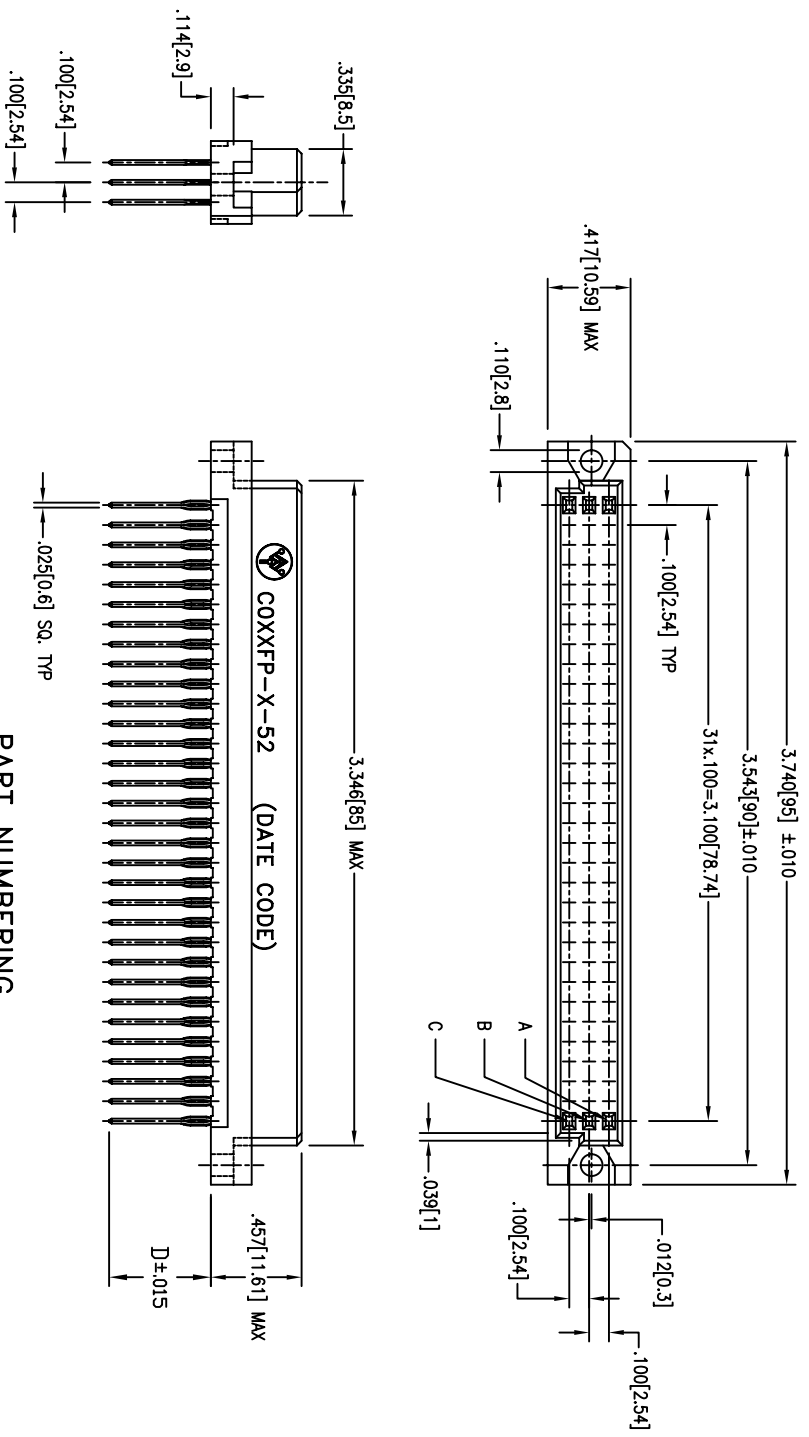
CONTACT RESISTANCE- 20 MILLIOHMS MAX.  
DIELECTRIC WITHSTANDING VOLTAGE- 1000 VAC @ 60 HZ.  
INSULATION RESISTANCE- 5000 MEGOHMS.  
CONTACT CURRENT RATING- 1.5 AMPS AT 20C.  
1 AMPS AT 70C.

**3. MECHANICAL CHARACTERISTICS:**

OPERATING TEMPERATURE- -55 TO +125C.  
DURABILITY- PER DIN 41612 LEVEL 2 STANDARD.  
MATING FORCES- INSERTION FORCE: 20 LBS MAX.  
RETENTION FORCE: .54 OZ MIN PER CONTACT

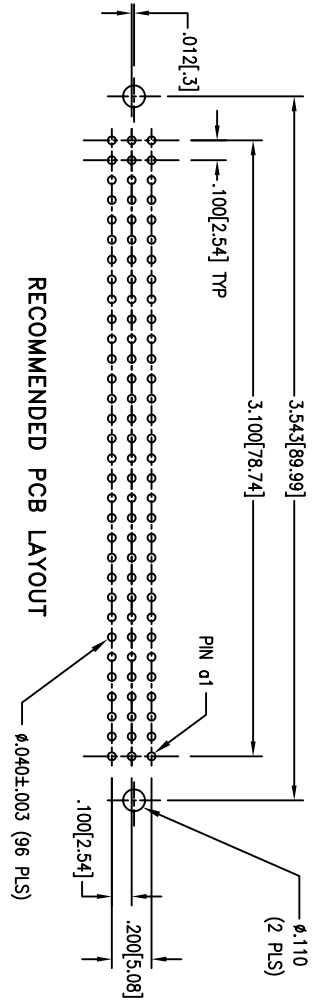
INSERTION FORCE- COMPLIANT SECTION 40 lbs  
MAXIMUM PER CONTACT.  
PUSHOUT FORCE- COMPLIANT SECTION 10 lbs  
MINIMUM PER CONTACT.  
HOLE SIZE REQUIREMENTS:  
FINISHED HOLE DIA: .040±.003

MARKING AS SHOWN, BLACK, BLUE OR RED INK.

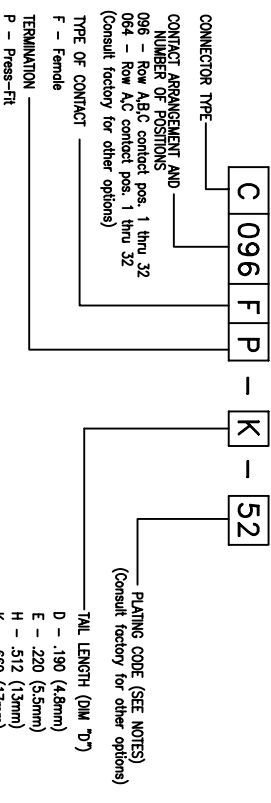


**CUSTOMER DRAWING**

GRS PART NUMBER	AWI PART NUMBER	# OF CONTACTS	CAVITIES LOADED	ROWS LOADED
GRS - #58920-308-00	C096FP-K-52	96	1-32	X X X
GRS - #58920-309-00	C064FP-K-52	64	1-32	X X X
GRS - #58920-394-00	C064FP-D-52	64	1-32	X X X
GRS - #58920-413-00	C096FP-D-52	96	1-32	X X X



**PART NUMBERING**



APPROVED		DATE	
NAME	TRB	01.97	01.97
CHECKED	JWM	01.97	01.97
QUALITY	WBK	01.97	01.97
APPROVED	JWM	01.97	01.97

THE INFORMATION, DATA AND/OR SERVICE CONTAINED ON THIS DRAWING ARE PROPRIETARY TO A.W. INDUSTRIES AND MAY NOT BE COPIED, REPRODUCED OR DISCLOSED IN ANY MANNER WITHOUT THE WRITTEN PERMISSION OF A.W. INDUSTRIES.

ALL DIMENSIONS ARE IN INCHES.  
TOLERANCES:  
DECIMAL .XX ±.015  
ANGLES ±1/2°

COMPLIANT PIN PRESS FIT DIN CONNECTOR  
FEMALE 96 POSITIONS, STYLE C

**A.W. Industries, Incorporated**  
6788 N.W. 17th AVENUE  
Fort Lauderdale, FL 33309

COXXFP-X-52

SCALE NONE  
SHEET 1 OF 1