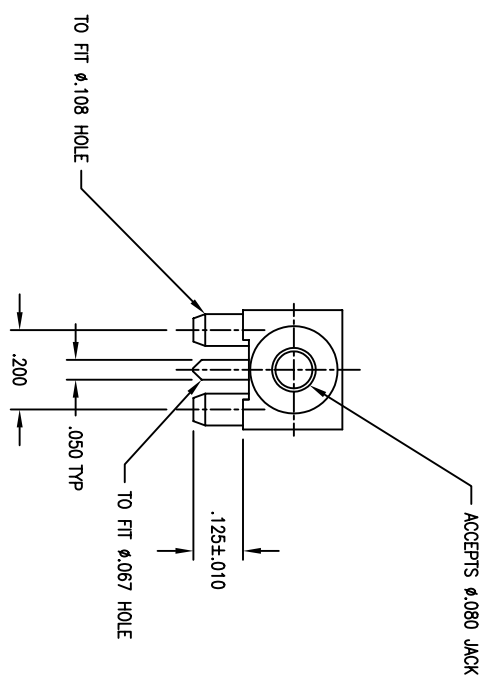
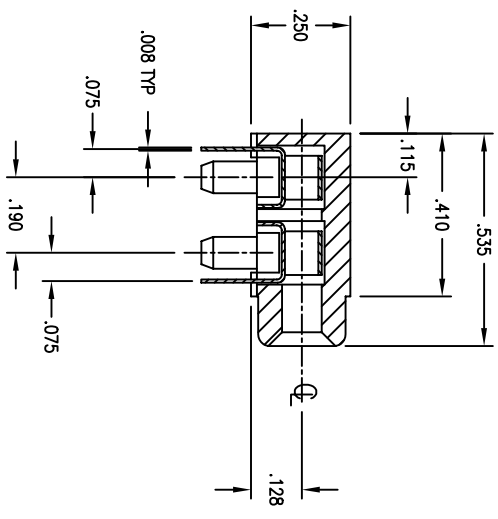
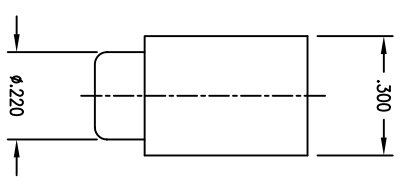
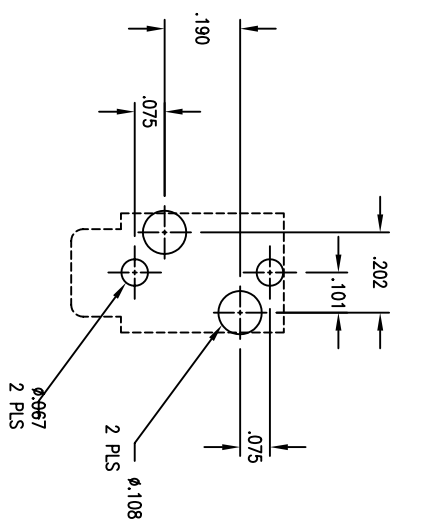


REVISIONS		DESCRIPTION	DATE	APPROVED
A	INITIAL RELEASE (ESR # 0157)		04-26-95	JWM

PCB LAYOUT (TOP VIEW)



AWI PART NUMBER	INSULATOR
8801P-1	BLACK
8801P-12	RED

TITLE
 .080 TEST JACK
 SINGLE LAYOUT P



A.W. Industries, Incorporated
 6788 N.W. 17th AVENUE
 Fort Lauderdale, FL 33309

APPROVED		NAME	DATE
DESIGN	JWM	JWM	04-95
CHECKED	YL	JWM	04-95
QUALITY	WBK	JWM	04-95
APPROVED	JWM	JWM	04-95

CUSTOMER DRAWING

THE INFORMATION, DATA AND/OR SPECIFICATIONS CONTAINED ON THIS DRAWING ARE PROPRIETARY TO A.W. INDUSTRIES AND MAY NOT BE COPIED, REPRODUCED OR DISCLOSED IN ANY MANNER WITHOUT THE WRITTEN PERMISSION OF A.W. INDUSTRIES.

ALL DIMENSIONS ARE IN INCHES.

TOLERANCES:
 DECIMAL .XX ±.015
 .XXX ±.005
 ANGLE ±1/2°

SIZE C
 SCALE NONE
 ACAD FILE NO. 03-0017-0A
 SHEET 1 OF 1

- NOTES:
- MATERIALS AND FINISH:**
 INSULATOR - GLASS FILLED POLYESTER, 94W-0 RATED.
 CONTACT MATERIAL - BERYLLIUM COPPER
 CONTACT PLATING - .000100 MATTE FINISH 60/40 Sn/Pb OVER .0000050 Ni
 - ELECTRICAL CHARACTERISTICS:**
 INSULATION RESISTANCE - 5000 MEGOHMS