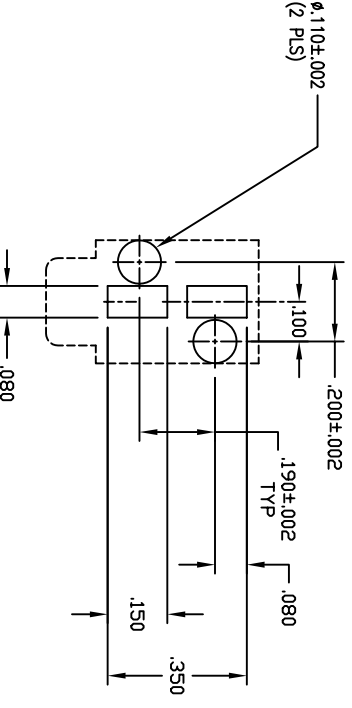
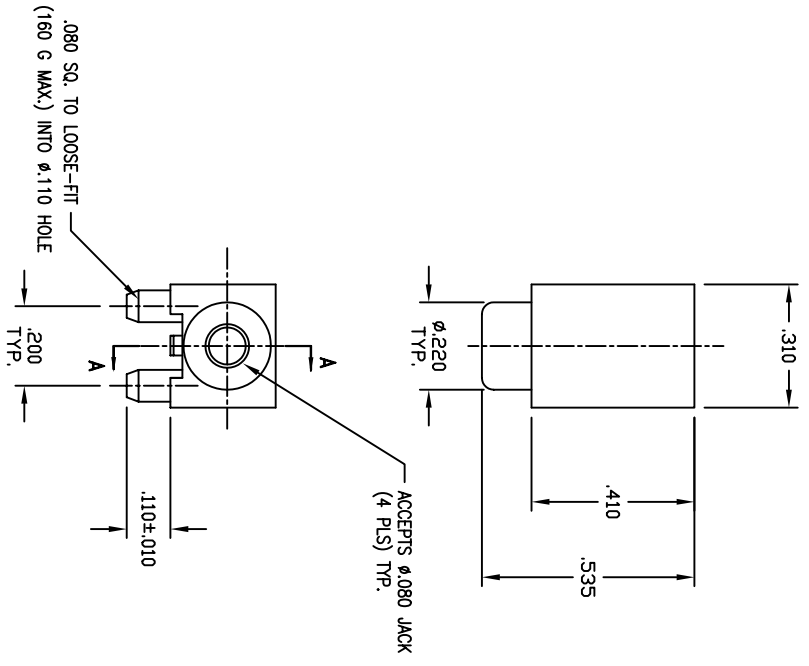
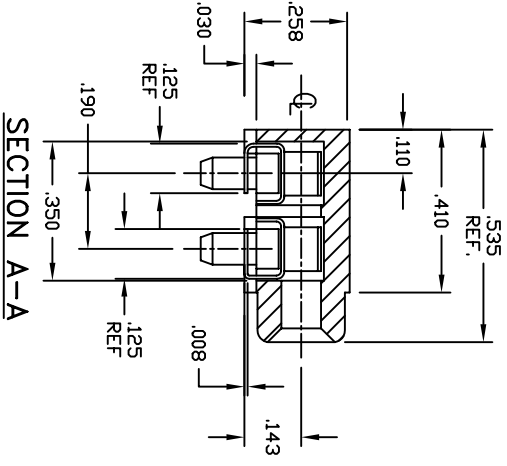


REVISIONS

REV	DESCRIPTION	DATE	APPROVED
A	INITIAL RELEASE (ESR #1053)	09-04-97	JWM
B	SEE ESR #1546	10-19-98	JWM
C	SEE ESR #1546A	11-17-98	JWM

NOTES:

- MATERIALS AND FINISH:**  
INSULATOR - HI-TEMP GLASS FILLED THERMOPLASTIC, 94W-0 RATED.  
CONTACT MATERIAL - BERYLLIUM COPPER  
CONTACT PLATING - .000200 MATTE FINISH 60/40 Sn/Pb OVER .0000050 Ni
- ELECTRICAL CHARACTERISTICS:**  
INSULATION RESISTANCE - 5000 MEGOHMS
- MECHANICAL CHARACTERISTICS:**  
OPERATING TEMPERATURE - -55C TO +125C.  
MAX. PROCESSING TEMPERATURE - 230C FOR 60 SECONDS.  
LEAD COPPLANARITY - .006 MAX.



APPROVED

NAME	DATE
DESIGN JWM	09-97
CHECKED JMP	09-97
QUALITY DKJ	09-97
APPROVED JWM	09-97

THE INFORMATION, DATA AND/OR SERVICES CONTAINED ON THIS DRAWING ARE PROPRIETARY TO A.W. INDUSTRIES AND MAY NOT BE COPIED, REPRODUCED OR DISCLOSED IN ANY MANNER WITHOUT THE WRITTEN PERMISSION OF A.W. INDUSTRIES.

ALL DIMENSIONS ARE IN INCHES.  
TOLERANCES:  
DECIMAL .XX ±.015  
.XXX ±.005  
ANGLE ±1/2°

TITLE  
SURFACE MOUNT, SINGLE LAYOUT P



**A.W. Industries, Incorporated**  
6788 N.W. 17th AVENUE  
Fort Lauderdale, FL 33309

SIZE C  
SCALE NONE  
DWG. NO. 8801P-1SM  
SHEET 1 OF 1

RECOMMENDED PCB LAYOUT