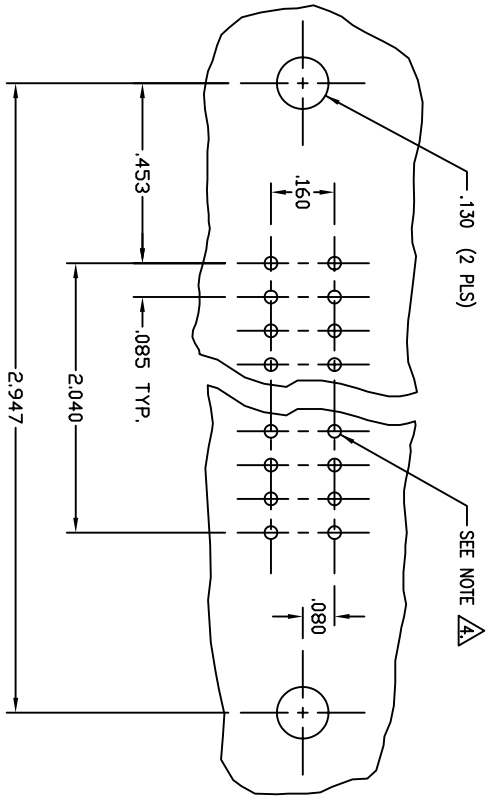


**RECOMMENDED HOLES LAYOUT**



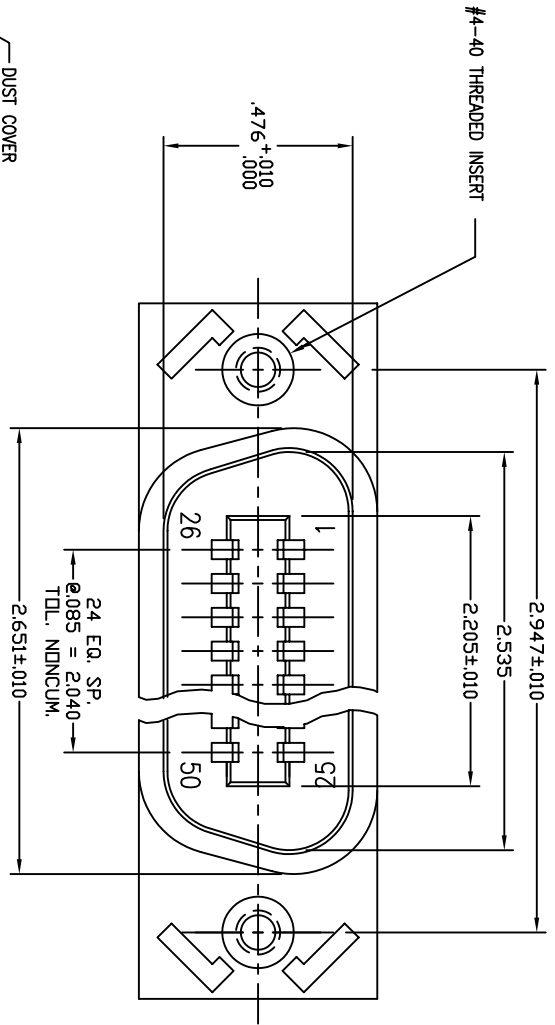
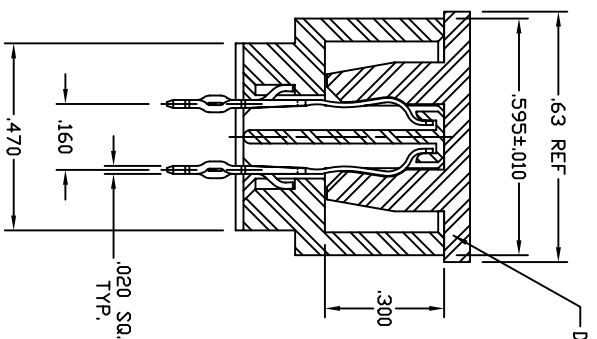
**NOTES:**

- MATERIAL:**
  - \* INSULATOR - 30% GLASS REINFORCED THERMOPLASTIC POLYESTER (PBT) VALOX 420 SE0 OR EQUIVALENT UL 94V-0 RATED, COLOR - BLACK;
  - \* CONTACT - PHOSPHORE BRONZE CDA 510.
  - \* CONTACT PLATING - NICKEL PLATE .000030 MIN. THICK ALL OVER, GOLD PLATE .000030 MIN. THICK ON CONTACT AREA, .000100 MIN. SnPb OVER TAIL AND COMPLIANT AREA.
- ELECTRICAL CHARACTERISTICS:**
  - \* CONTACT RESISTANCE - 10 MILLIOHMS MAX.
  - \* INSULATION RESISTANCE - 5000 MEGOHMS.
  - \* WITHSTANDING VOLTAGE - 1000 VRMS
  - \* CURRENT RATING - 3 AMPERS MAX. PER CONTACT PAIR.
- MECHANICAL CHARACTERISTICS:**
  - \* OPERATING TEMPERATURE - FROM -55C TO +105C.
  - \* COMPLIANT SECTION INSERTION FORCE - 30 LB. MAX. PER CONTACT.
  - \* COMPLIANT SECTION WITHDRAWAL FORCE - 10 LB. MIN. PER CONTACT.

**PRINTED CIRCUIT BOARD HOLE INFORMATION:**

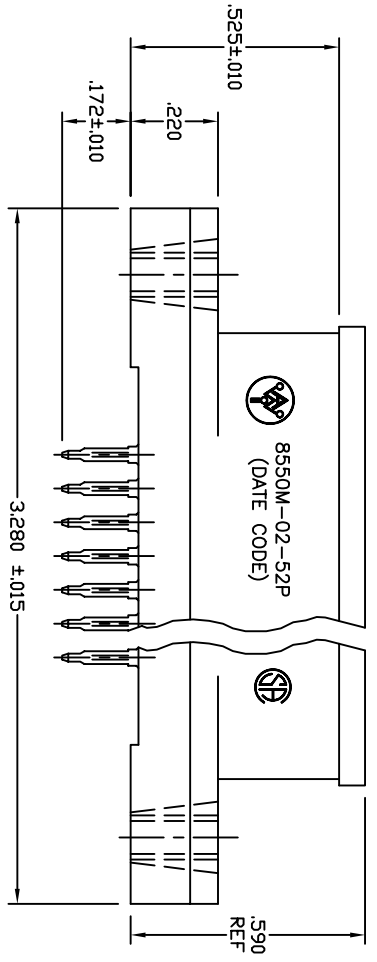
- \* BEFORE THRU-HOLE PLATING - .037-+--.039 DIA.
- \* COPPER THRU-HOLE PLATING THICKNESS - .001-+--.002.
- \* TIN-LEAD THRU-HOLE PLATING THICKNESS - .0003-+--.0012 PORE FREE.
- \* FINISHED HOLE DIMENSION - .030-+--.035 DIA.

- FLAT ROCK ASSEMBLE TO BACKPANEL, NO SPECIAL TOOLING REQUIRED.
- MARKING AS SHOWN.



TOP VIEW SHOWN WITHOUT DUST COVER.

**CUSTOMER DRAWING**



REV	DESCRIPTION	DATE	APPROVED
A	INITIAL RELEASE (ESR 0881)	04-03-97	JWM
B	SEE ECN 90414	05-23-97	JWM
B1	SEE ESR 2067	11-14-00	JWM
C	SEE ECN 90616	05-18-01	JWM

<b>APPROVED</b>		THE INFORMATION, DATA AND/OR SERVICES CONTAINED ON THIS DRAWING ARE PROPRIETARY TO A.W. INDUSTRIES AND MAY NOT BE COPIED, REPRODUCED OR DISCLOSED IN ANY MANNER WITHOUT THE WRITTEN PERMISSION OF A.W. INDUSTRIES.	
NAME	DATE	ALL DIMENSIONS ARE IN INCHES.	
JWM	04-97	TOLERANCES:	
CHECKED	JMP	DECIMAL	.XX ±.015
QUALITY	WBK	ANGLE	±1/2°
APPROVED	JWM	SCALE	NONE
	04-97	ACAD FILE NO.	03-0489-0C
		SHEET	1 OF 1

**8550M-02-52P**  
(DATE CODE)

**A.W. Industries, Incorporated**  
6788 N.W. 17th AVENUE  
Fort Lauderdale, FL 33309

**PRESS FIT CONNECTOR**  
**50 PIN PLUG**