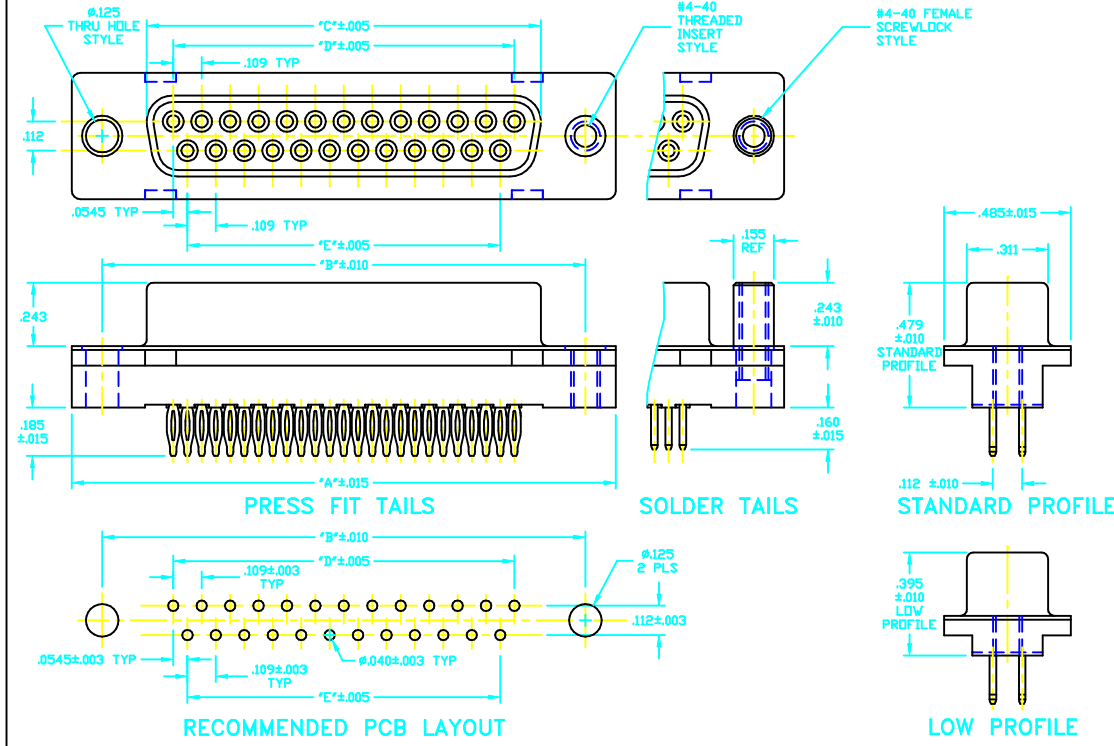




A.W. Industries, Inc.
AN ISO 9001 COMPANY

5700 SERIES SHIELDED FEMALE D-SUBMINIATURE PRESS FIT OR SOLDER TAIL CONNECTOR



DIMENSIONS		NO. OF POS.			
DIMS.		9	15	25	37
A		1.214	1.541	2.086	2.740
B		.980	1.307	1.852	2.506
C		.640	.967	1.512	2.166
D		.436	.763	1.308	1.962
E		.327	.654	1.199	1.853
F		.628	.955	1.500	2.154

RECOGNIZED UNDER THE COMPONENT PROGRAM OF UNDERWRITERS LABORATORIES INC. FILE NO. E151639



CERTIFIED BY CANADIAN STANDARDS ASSOCIATION, FILE NO. LR 101045



MATERIALS AND FINISH:

- INSULATOR - GLASS FILLED THERMO-PLASTIC POLYESTER, 94V-0 RATED, BLACK.
- CONTACTS - PHOSPHORE BRONZE CDA 510
- SCREWLOCK - BRASS
- SCREWLOCK PLATING - .000050 in Ni, ALL OVER
- THREADED INSERT - BRASS
- SHELL - STEEL
- SHELL PLATING - BRIGHT TIN ALL OVER.

ELECTRICAL CHARACTERISTICS:

- CONTACT RESISTANCE- 10 MILLIOHMS MAX.
- DIELECTRIC WITHSTAND VOLTAGE - 1000 VAC MIN.
- INSULATION RESISTANCE- 5000 MEGOHMS MIN.
- CONTACT CURRENT RATING- 5 AMPERES.

MECHANICAL CHARACTERISTICS:

- OPERATING TEMPERATURE- -55° TO +125°C.
- DURABILITY- 200 CYCLES MIN. (Dependant upon contacts plating thickness selected).
- INSERTION FORCE - COMPLIANT SECTION 40 lbs MAXIMUM PER CONTACT.
- WITHDRAWAL FORCE - COMPLIANT SECTION 10 lbs MINIMUM PER CONTACT.
- HOLE SIZE REQUIREMENTS:
DRILLED HOLE DIA: .0453±.001.
PLATING: .001 TO .003 COPPER AND .0003 TO .0008 SOLDER.
FINISHED HOLE DIA: .040±.003.

FLAT ROCK ASSEMBLE TO BACKPLANE, NO SPECIAL TOOLING REQUIRED.

PART NUMBERING



SERIES CODE
NUMBER OF CONTACT POSITIONS (9,15,25,37)

MOUNTING STYLE
1 - Thru Hole #.125
2 - #4-40 Threaded Insert
3 - #4-40 Screwlock (Standoff)

PROFILE
1 - Low Profile (.395 High)
2 - Standard Profile (.479 High)

TERMINATION
P - Press Fit
S - Dip Solder

PLATING
52 - .000050 in gold on contact point, compliant section and tail fin-lead (Consult factory for other options)