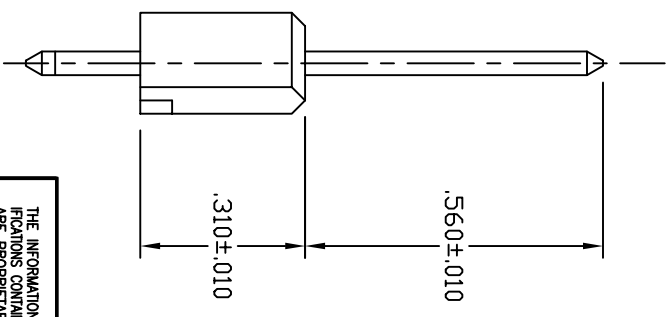
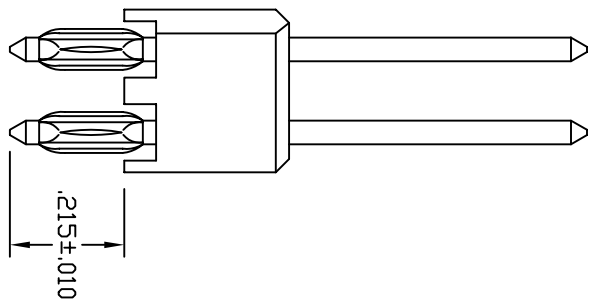
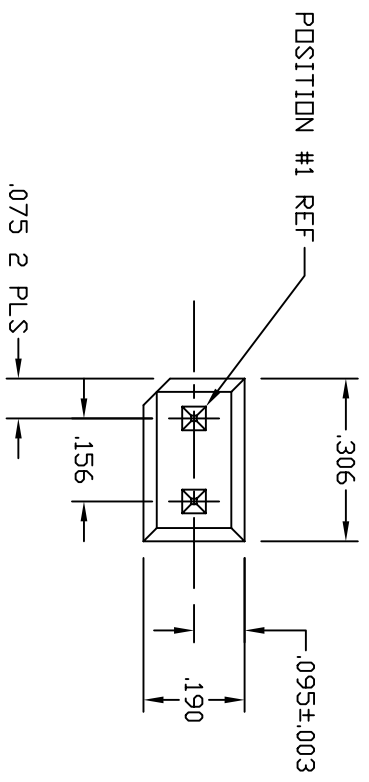


REVISIONS			
REV	DESCRIPTION	DATE	APPROVED
A	INITIAL RELEASE (ESR 1861)	11-08-99	JWM



**NOTES:**

- 1. MATERIALS AND FINISH:**  
 INSULATOR: 30% GLASS FILLED PBT, 94 V-0 RATED, BLACK.  
 CONTACTS: CDA 510, GRADE A PHOSPHOR BRONZE.  
 FINISH: 100µin MIN. MATTE FINISH 60/40 SnPb OVER 50µin MIN. Ni.
- 2. ELECTRICAL CHARACTERISTICS:**  
 INSULATION RESISTANCE: 5000 MEGOHMS.  
 DIELECTRIC WITHSTANDING VOLTAGE: 1500 VAC.  
 CURRENT RATING: 5 AMPS.
- 3. MECHANICAL CHARACTERISTICS:**  
 OPERATING TEMPERATURE: -55° TO +125°C.  
 RETENTION IN HOUSING: 5 LBS.  
 COMPLIANT SECTION:  
 INSERTION FORCE: 40 LBS MAX. PER PIN  
 WITHDRAWAL FORCE: 10 LBS MIN. PER PIN.  
**PTH REQUIREMENTS:**  
 DRILLED HOLE DIA: .0785 +.0005  
 PLATING: .001/.003 COPPER AND .003 MIN. SOLDER.  
 FINISHED HOLE DIA: .070/.075

AUTHENTICATION	
NAME	DATE
DRAWN JWM	11-99
CHECKED VF	11-99
QUALITY DKJ	11-99
APPROVED JWM	11-99

THE INFORMATION, DATA AND/OR SPECIFICATIONS CONTAINED ON THIS DOCUMENT ARE PROPRIETARY TO A.W. INDUSTRIES AND MAY NOT BE COPIED, DUPLICATED OR DISCLOSED IN PART OR WHOLE WITHOUT AUTHORIZATION IN WRITING FROM A.W. INDUSTRIES.

ALL DIMENSIONS ARE IN INCHES.

TOLERANCES:  
 DECIMAL .XX ±.015  
 .XXX ±.005  
 ANGLE ±1/2°

**TITLE**  
 .045 SQ. HEADER  
 COMPLIANT PIN PRESS-FIT

**A.W. Industries, Incorporated**  
 6788 N.W. 17th AVENUE  
 Fort Lauderdale, FL 33309

SIZE **B**  
 SCALE NONE  
 DWG. NO. 5045-02-771  
 ACAD FILE NO. 03-0826-0A  
 SHEET 1 OF 1

**CUSTOMER DRAWING**