

REVISIONS		DATE	APPROVED
A	INITIAL RELEASE	12-07-93	JWM
B	ECN PENDING (ECN 90300)	11-14-94	JWM

NOTES:

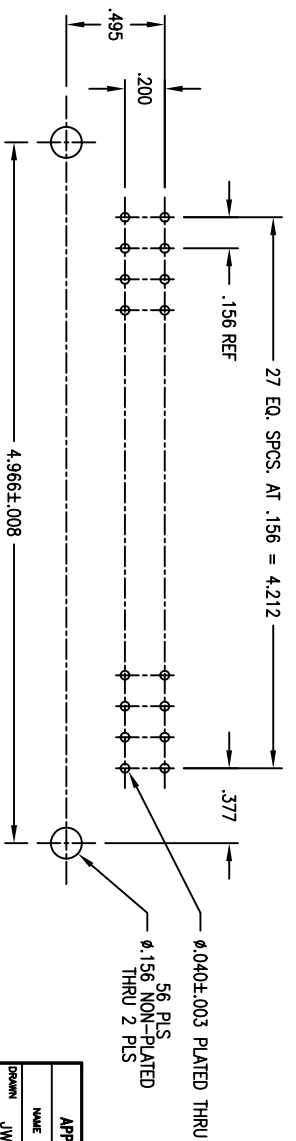
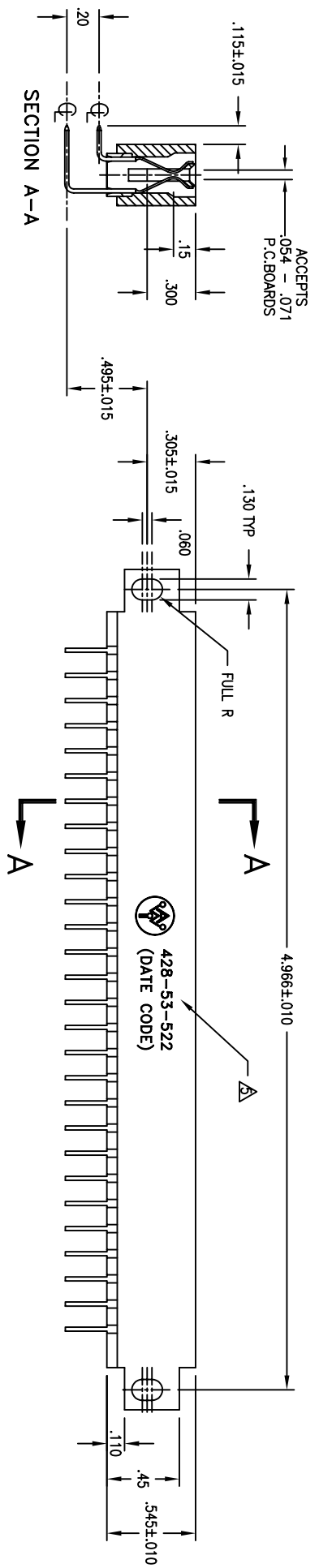
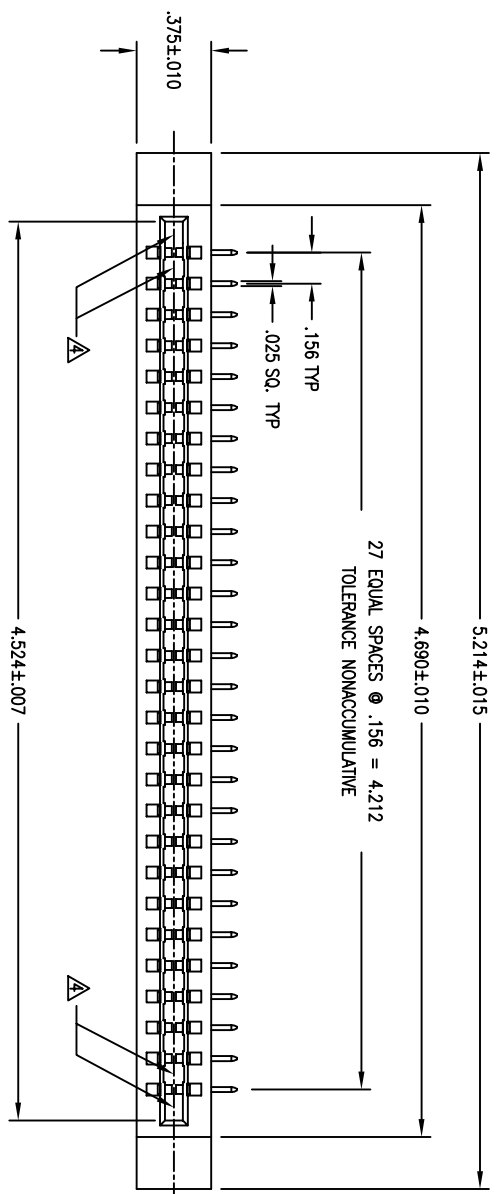
- MATERIAL:**
INSULATOR MATERIAL - GLASS FILLED THERMO-PLASTIC
POLYESTER, 94V-0 RATED, BLACK.
CONTACT MATERIAL - CDA 510.
CONTACT PLATING - .000030 MIN Au OVER, .000050 MIN Ni ON CONTACT POINT, TAIL AND COMPLIANT SECTION .000150 MIN MATTE FINISH 60/40 SnPb OVER .000050 MIN Ni.

2. ELECTRICAL CHARACTERISTICS:

- CONTACT RESISTANCE:
CONTACT TO DAUGHTER CARD - 10 MEGOHMS.
- DIELECTRIC WITHSTANDING VOLTAGE - 1800 VAC.
- INSULATION RESISTANCE - 5000 MEGOHMS.
- CONTACT CURRENT RATING - 3 AMPS AT 30°C.

3. MECHANICAL CHARACTERISTICS:

- OPERATING TEMPERATURE - -55° TO +125°C.
- DURABILITY - PER BELLCORE TR-NWT-000078.
- .300 CARD SLOT DEPTH CONTROLLED BY THESE SURFACES ONLY.
- MARKING AS SHOWN.



CUSTOMER DRAWING

APPROVED		DATE
NAME	JWM	11-94
CHECKED	YL	11-94
QUALITY	WBK	11-94
APPROVED	JWM	11-94

THE INFORMATION, DATA AND/OR SPECIFICATIONS CONTAINED ON THIS DRAWING ARE PROPRIETARY TO A.W. INDUSTRIES AND MAY NOT BE COPIED, REPRODUCED OR DISCLOSED IN ANY MANNER WITHOUT THE WRITTEN PERMISSION OF A.W. INDUSTRIES.

ALL DIMENSIONS ARE IN INCHES.

TOLERANCES:
DECIMAL .XX ±.015
XXX ±.005
ANGLE ±1/2°

SIZE C
SCALE NONE
DWG. NO. 428-53-522
SHEET 1 OF 1

A.W. Industries, Incorporated
8788 N.W. 17th AVENUE
Fort Lauderdale, FL 33309

TITLE
.156 CENTERS CARD EDGE CONNECTOR
28 POSITIONS-RIGHT ANGLE ON .200 CENTERS